



TRAVEL GUIDE & DRIVING INSTRUCTION TO FINCA EL REGALO

Competa Private
Holiday Rentals

On arrival (at least 1 hour before coming to Competa) contact our key manager. She will show you the house.

For your own orientation look at driving instructions below:



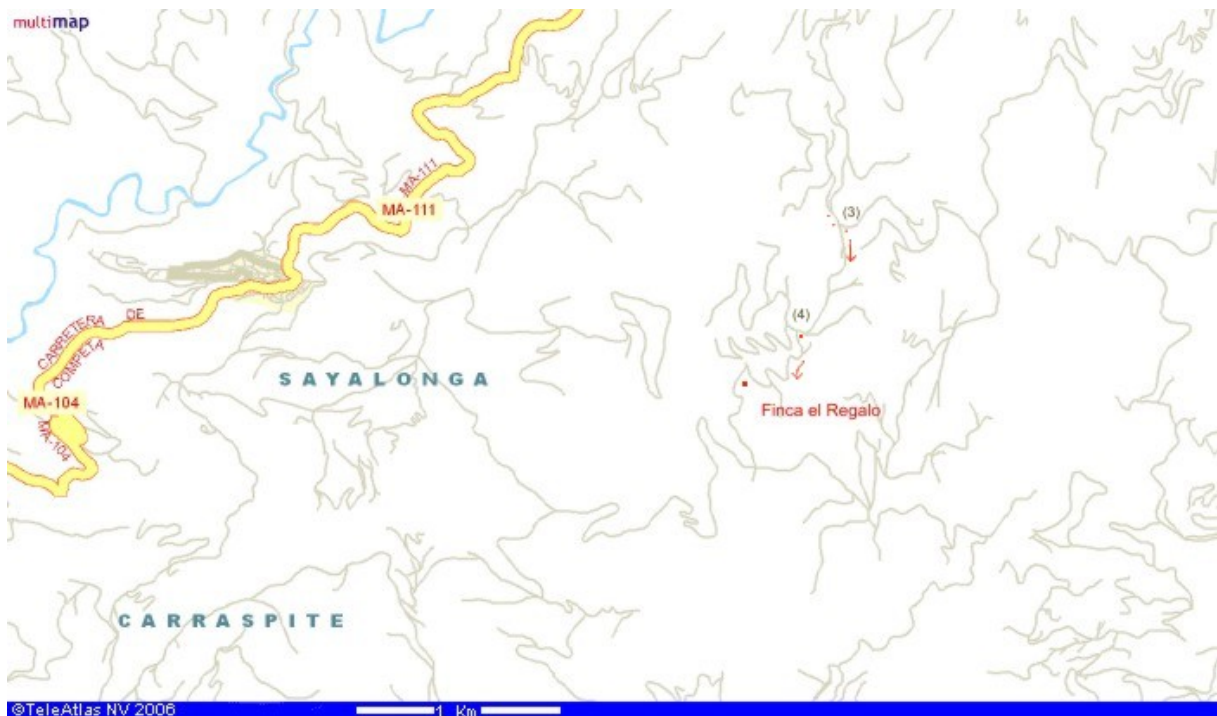
➡ From E15 take exit Algarrobo and go up to Competa M111

➡ From X-crossing MA111 just for Competa turn right direction Torrox.

➡ After ~500m just for the Venta de Palma ^{shop (1)} turn right. Follow the asphalt road uphill till the Y-ing ⁽²⁾ (about 1km). Go here left and down. Orientation point: Finca Furia.



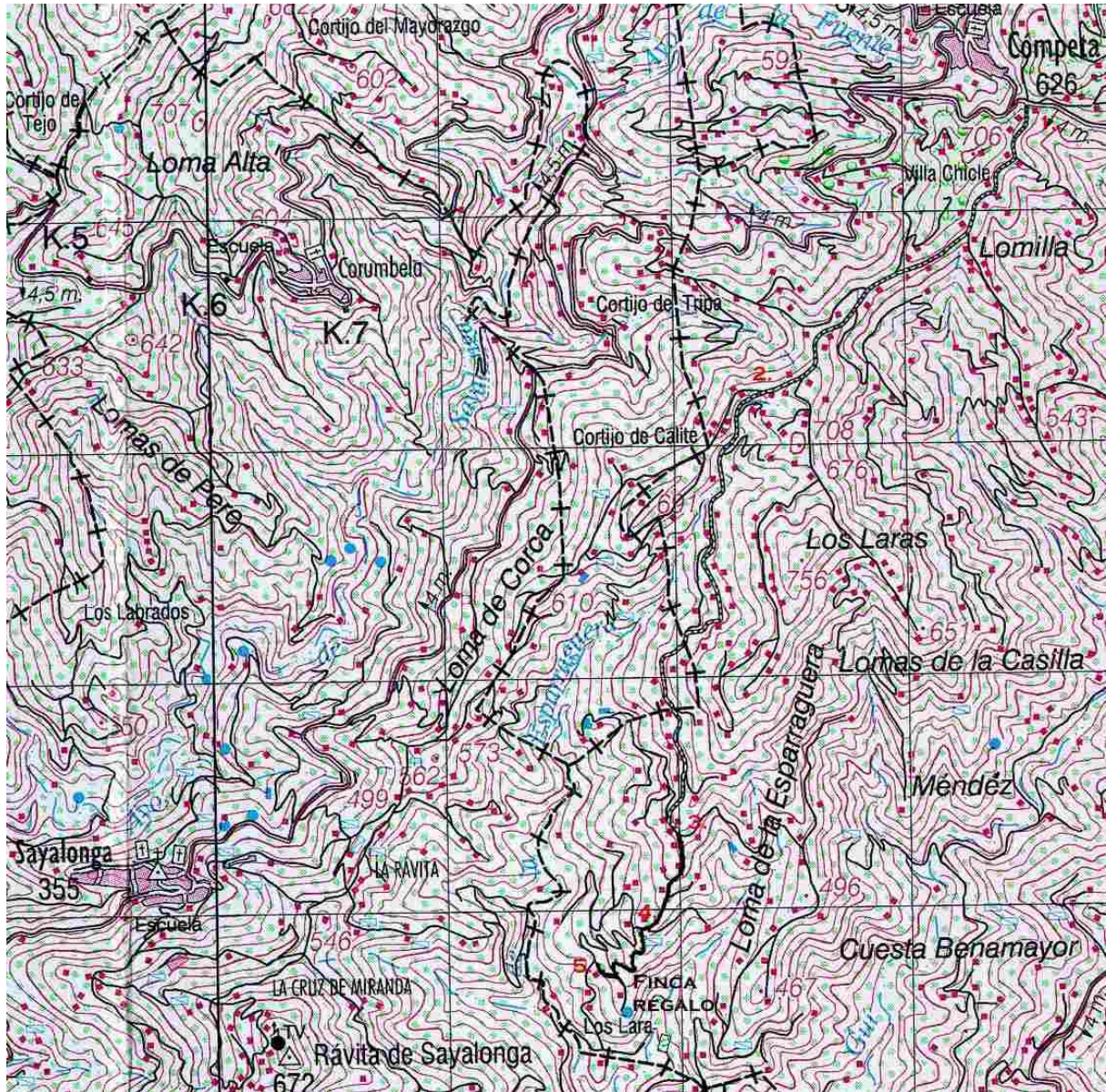
➡ Follow the asphalt road (about 3km) till on your right side you will see 3 electrical masts, the first one with transformer (3). Before the third mast and after cypress tree hedge turn right into unpaved road and go carefully down. Orientation points: Casa Kismet, Casa Colina.



➡ After ~450m you will see on left side a big water deposit and right to you the Finca el Galo. Go 10m further and turn sharp left just in front of olive tree having on your left water deposit. (4).

➡ Follow steep road down and after 400m passing Villa Cumpleanos you will reach your destination Finca el Regalo.

Detailed map of the region:



Competa Private Holiday Rentals
wish you a nice holiday stay in Finca el Regalo
and beautiful weather!